

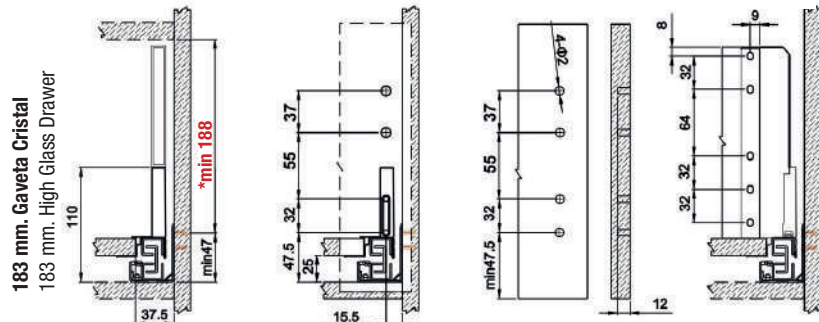
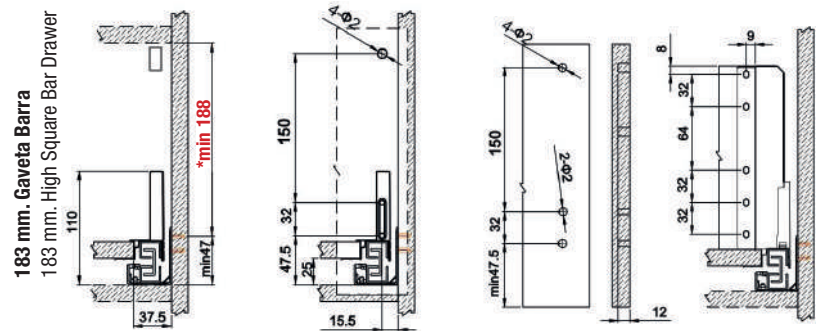
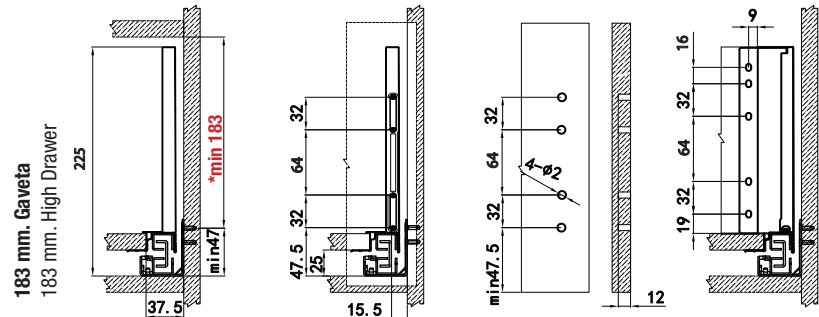
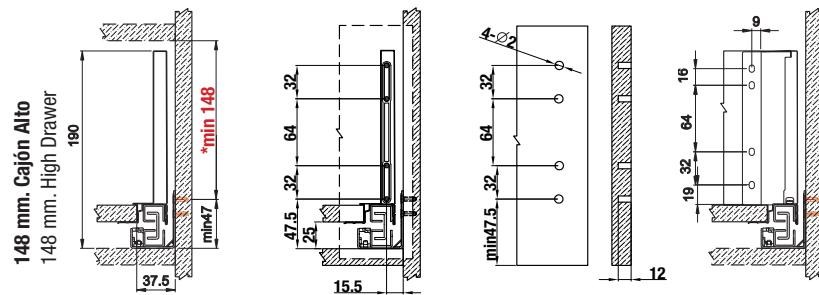
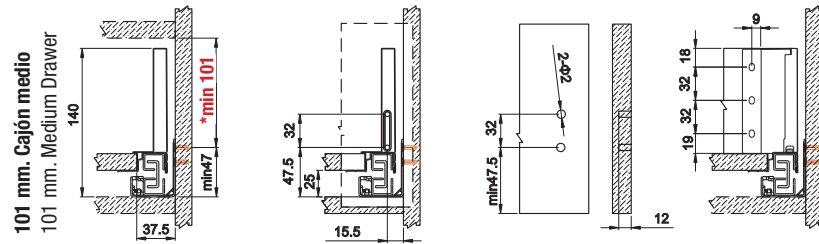
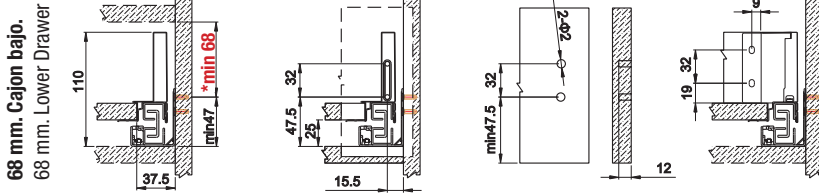
ADVANCED

EVOLUTION



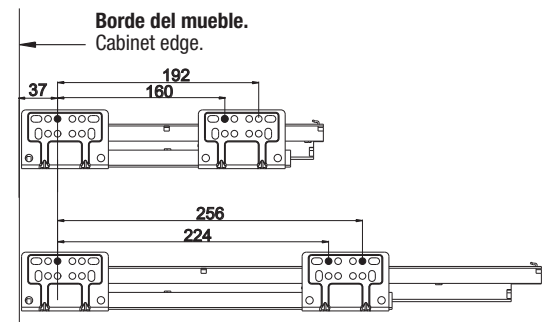
Dimensiones de instalación. Installation dimension.

* Para cualquier tipología de instalación hay que respetar las medidas mínimas marcadas en rojo.
 * For any type of installation, the minimum measures marked in red must be respected.



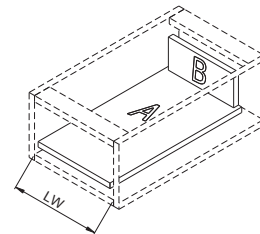
Características del producto. Feature of the product.

- Cajón de freno doble pared, de excelente calidad, equipado con guía de extracción total de 35 Kg. de carga dinámica y una óptima sonoridad y deslizamiento.
- Cuenta con regulaciones interiores automáticas por excéntrica y un rápido e intuitivo sistema de montaje. Clip de fijación que evita desmontajes accidentales.
- Double wall brake box, excellent quality, equipped with a total extraction guide of 35 Kg. of dynamic load and an optimal sonority and sliding.
- It has automatic internal eccentric regulations and a quick and intuitive mounting system. Fixing clip that prevents accidental disassembly.



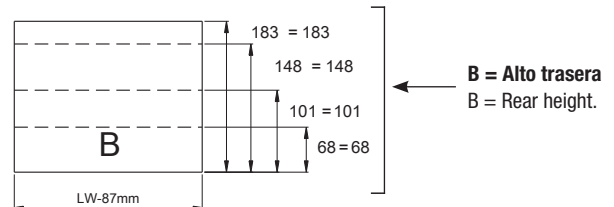
Colocación de tornillos en la guía. Screw placement in the guide.

Panel inferior y posterior de 16 mm. de grueso.
Bottom and back panel measure 16 mm. density panel.

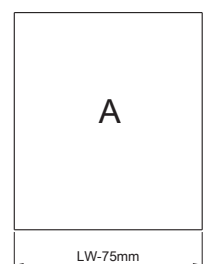


LW = Medida interior del mueble.
LW = Internal cabinet width.

B = Ancho trasera = LW - 87 +/- 0.5
B = Back width. = LW - 87 +/- 0.5

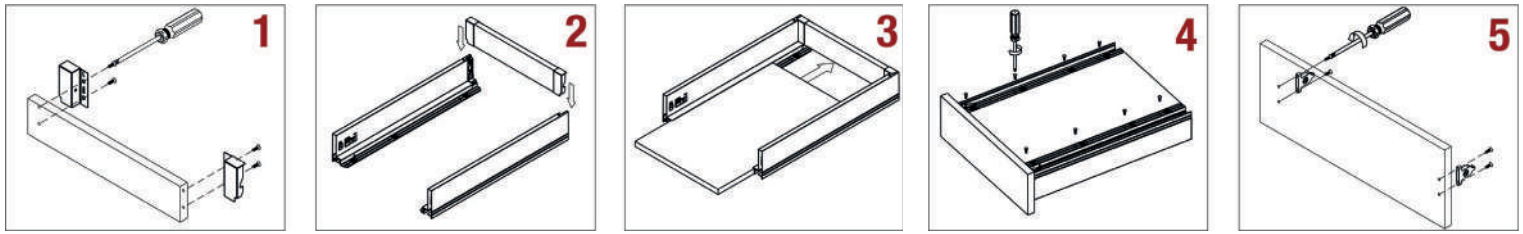


A = Fondo Base = Longitud nominal de la guía - 8 +/- 0.5
A = Base Fund. = Nominal length of the guide - 8 +/- 0.5

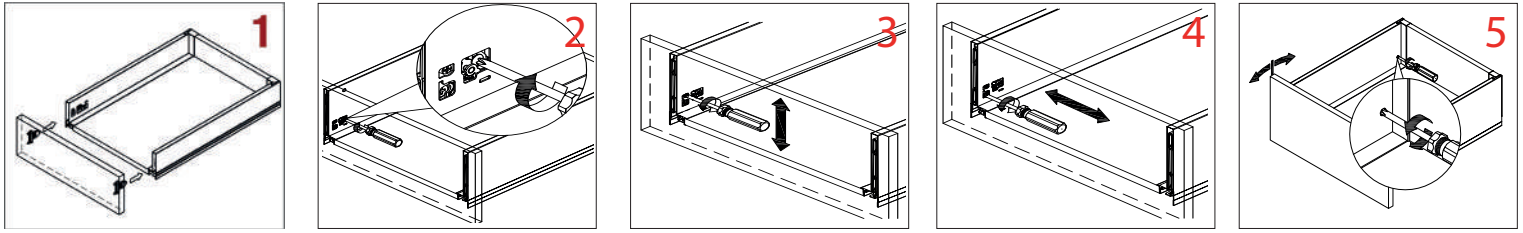


A = Ancho Base = LW - 75 +/- 0.5
A = Base Width. = LW - 75 +/- 0.5

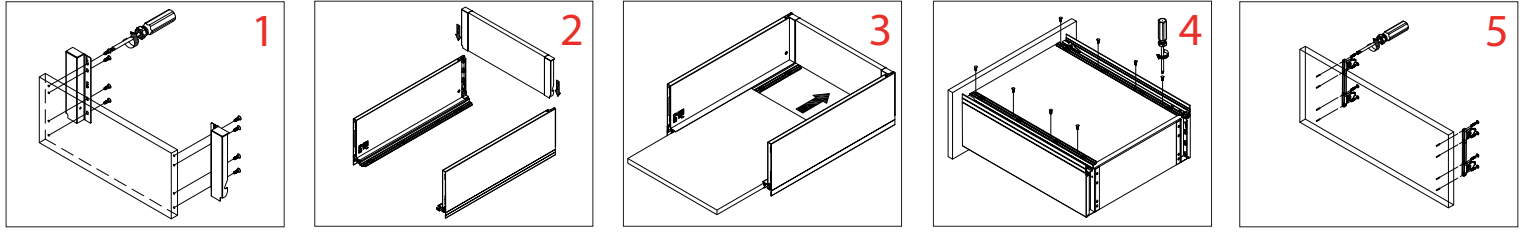
Montaje del cajón H87 / H117. Assembly of the drawer H87 / H117.



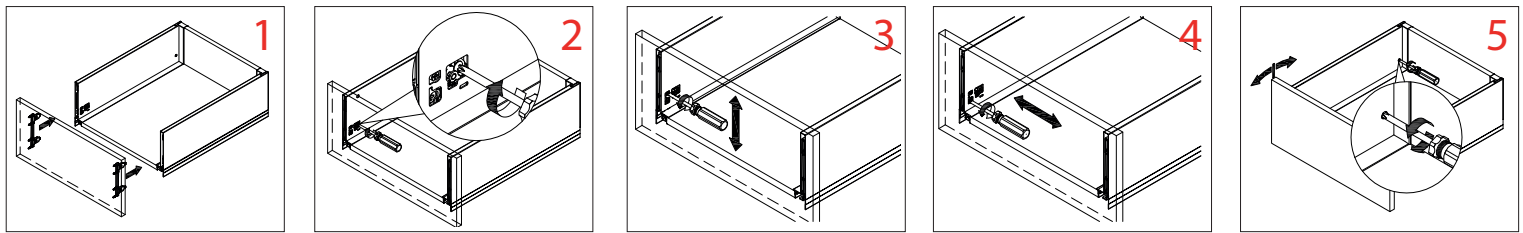
Ajuste del frente H87 / H117. Adjusting the front H87 / H117.



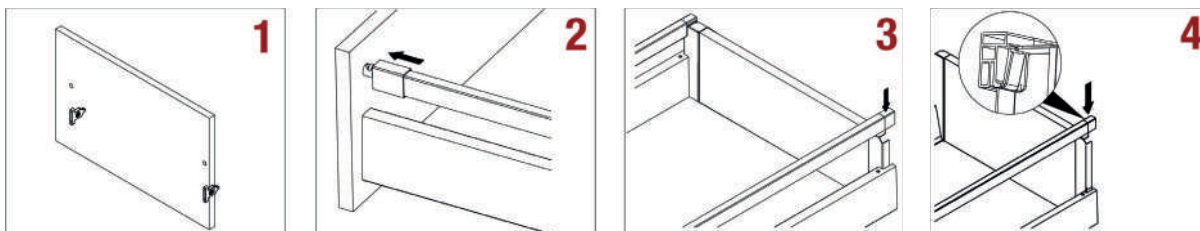
Montaje del cajón H167. Assembly of the drawer H167.



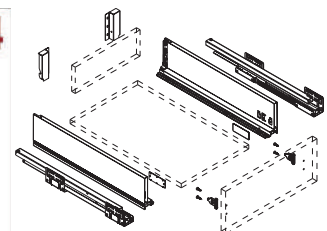
Ajuste del frente H167. Adjusting the front H167.



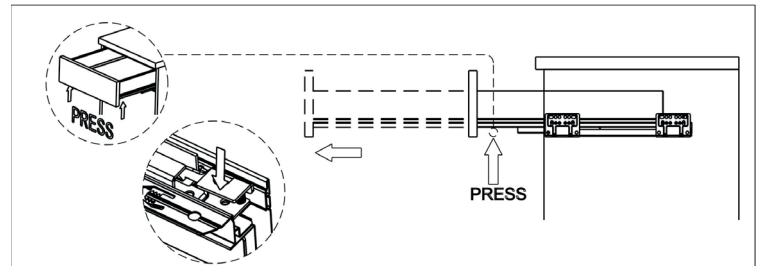
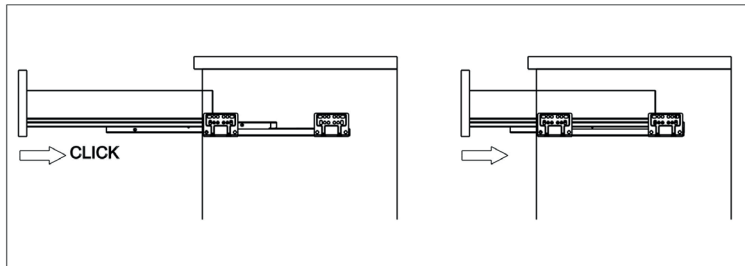
Montaje del cajón H87 + Barras. Assembly of the drawer H87 + Bars.



Croquis despiece.



Montaje y desmontaje del cajón. Assembly and disassembly of the drawer.



WARNING

MUY IMPORTANTE EL TORNILLO DE BLOQUEO HABRÁ QUE LIBERARLO ANTES DE INICIAR LA REGULACIÓN DEL FRENTE Y VOLVER A BLOQUEARLO UNA VEZ FINALIZADA LA REGULACIÓN.
 VERY IMPORTANT THE LOCKING SCREW IS TO BE RELEASED BEFORE STARTING THE FRONT REGULATION AND BLOCKING IT ONCE THE REGULATION IS FINISHED.

